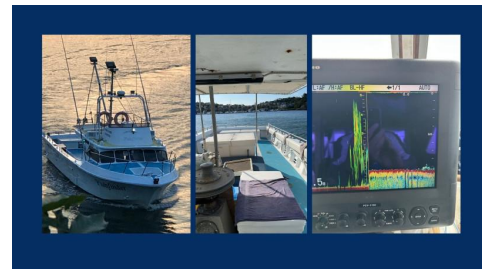




## Fishing Charter Boat - Harris Craft 45

\$195000



### Specifications

#### Boat Details

Price	\$195000	Boat Brand	HARRISCRAFT
Model	45	Length	13.72
Year	1986	Category	Commercial Boats
Hull Style	Single	Hull Type	GRP
Power Type	Power	Stock Number	
Condition	Used	State	New South Wales
Suburb	WOOLWICH	Engine Make	Cummins CT6TA

#### Disclaimer

Our company offers the details of this vessel in good faith but cannot guarantee or warrant the accuracy of this information nor warrant the condition of the vessel. A buyer should instruct his agents and/or surveyors to investigate such details buyer desires validated. This vessel is offered subject to prior sale, price change or withdrawal without notice.



Phone: +61 402 135 442  
Email: [cath@cbyachtsales.com](mailto:cath@cbyachtsales.com)  
Address: Balgowlah NSW 2093  
Website: <https://www.cbyachtsales.com/>



## Description

'Fishfinder' - Proven Fishing Charter Boat

Fishfinder is a serious, work-ready Harriscraft charter vessel with a long-standing reputation for reliability and results. Owner-operated since 1992 and maintained to an exceptional standard, she's built for operators who want a turn-key setup and great working lifestyle.

### Survey & Capability

- AMSA Survey: 1E (14 + 2), 2C (12 + 2), 3C (4 crew)
- Versatile for offshore, inshore, and extended trips
- Proven commercial charter platform

### Vessel Overview

- Harriscraft fishing charter boat - purpose-built
- Extremely well maintained with continuous upgrades
- New engines every 10 years for long-term reliability
- Back Deck replaced 2025
- Turn-key operation - ready to go

### Power & Fuel

- Cummins CT6TA - 430hp main engine
- Twin Disc MG 507 gearbox (1.98:1)
- Kubota Seawasp 6.8kVA generator
- 4 x 450L fuel tanks
- 100L freshwater tank
- Racor & Fleetguard fuel filtration system

### Navigation & Electronics

- CourseMaster 950 autopilot with heavy-duty rudder sensor
- Furuno FCV-1150 colour sounder
- 1kW (shallow water) & 3kW (deep water) transducers
  
- Furuno radar - 16-mile range
- TMQ C-Plot system with Dell 5TB PC
- Navionics Plus East Coast charts on 25" Samsung display
- Furuno GP32 GPS input
- GME VHF & 27MHz radios
- Plath commercial compass
- Dual EPIRBs (float-free + satcom)

### Accommodation & Galley

---

#### Disclaimer

Our company offers the details of this vessel in good faith but cannot guarantee or warrant the accuracy of this information nor warrant the condition of the vessel. A buyer should instruct his agents and/or surveyors to investigate such details buyer desires validated. This vessel is offered subject to prior sale, price change or withdrawal without notice.



Phone: +61 402 135 442  
Email: [cath@cbyachtsales.com](mailto:cath@cbyachtsales.com)  
Address: Balgowlah NSW 2093  
Website: <https://www.cbyachtsales.com/>



- 2 crew bunks + 1 skipper's bunk
- Dinette/chart table setup
- Samsung fridge
- Stainless 2-burner stove & grill
- Sanyo microwave & 240V kettle
- Cabin lighting, fan, stereo & charging points

#### Deck & Fishing Setup

- Pot hauler
- Large insulated deck box
- Icy Tech 500 icebox
- 1-tonne spray brine fish room
- Deck wash & multiple pump systems
- Built for serious fishing operations

#### Safety & Extras

- Full survey-compliant safety gear
- Anchoring system & deck lighting
- Spare parts included
- Fully serviced and ready for immediate work

#### The Bottom Line

Reliable, capable, and professionally maintained, Fishfinder is a proven charter boat that delivers. Whether you're expanding your fleet or stepping into the industry, this is a no-nonsense vessel that earns its keep and offers good returns and a great lifestyle.

Call Cath at CB Yacht Sales for more information and to organise a viewing.

---

## Features

Designer	Harry French
Builder	Harriscraft
Water (Potable) Capacity (l)	100L
Hull Construction Material	GRP
Hull Type	Mono Hull
Deck Construction Material	GRP
Country Origin	Australia
Length (feet)	45
Length (m)	13.71
Beam/Width (feet)	12'30"
Beam/Width (m)	3.75

---

#### Disclaimer

Our company offers the details of this vessel in good faith but cannot guarantee or warrant the accuracy of this information nor warrant the condition of the vessel. A buyer should instruct his agents and/or surveyors to investigate such details buyer desires validated. This vessel is offered subject to prior sale, price change or withdrawal without notice.



Phone: +61 402 135 442  
Email: [cath@cbyachtsales.com](mailto:cath@cbyachtsales.com)  
Address: Balgowlah NSW 2093  
Website: <https://www.cbyachtsales.com/>



---

Draft (m)	1.0
Draft (feet)	3'28"
Number of Helms	2
Displacement	18 T
Colour	White
Engine Notes	Full mechanical records available. Engines changed over every 10 years.
Number Of Engines	1
Engine Hours	3331
Horse Power (hp)	430
Drive Type	Diesel Shaft Drive
Generator	Kubota Seawasp 6.8 Kva -300 hrs
Number of Batteries	2 x banks of N150 batteries = 4 for main engine and 1 x N50 for generator.
Fuel Type	Diesel
Number of Fuel Tanks	4 x 450 L
Fuel Tank Capacity (L)	1800 L
Propeller	1 x 4 blade bronze
Steering System	Hydraulic Steering with Vickers VTM42 pump
Accommodation Notes	Sleeps 2 crew and 1 skipper down below
Number of Berths	3
Number of Showers	1
Number of Toilets	1
Toilet Type	electric
Holding Tank (L)	Yes
Galley Notes	Sanyo Microwave
Stove	stainless steel 2 burner gas cooktop and grill
Refrigeration	Samsung Refrigerator
Number of Sinks	1 sink
Entertainment and Appliances Notes	Stereo, lights and charging ports in cabin along with fan
Bilge Pump	As per AMSA requirements
Deck Gear	Pot Hauler, Large insulated Deck box, Icy Tech 500 ice box, 1 tonne spray brine fish room
Electrics	240V main, 12V auxillary
Electronics Navigation	Autopilot - Coursemaster 950, Furuno 1150 Sounder with dual transducer, 1kW for shallow water and 3kW for deep water. Furuno Radar with 16 mile range. Navionics Plus East Coast charts showing on 25" Samsung monitor. Furuno GPS GP32 feed live data to TMQ C-Plot module which is powered by a Dell 5TB PC.
Safety Gear	As per AMSA Requirements
Ground Tackle	As per AMSA Requirements

---

#### Disclaimer

Our company offers the details of this vessel in good faith but cannot guarantee or warrant the accuracy of this information nor warrant the condition of the vessel. A buyer should instruct his agents and/or surveyors to investigate such details buyer desires validated. This vessel is offered subject to prior sale, price change or withdrawal without notice.



Phone: +61 402 135 442  
Email: [cath@cbyachtsales.com](mailto:cath@cbyachtsales.com)  
Address: Balgowlah NSW 2093  
Website: <https://www.cbyachtsales.com/>



---

GPS	Furuno GPS GP32
Number of Fish Finders	Furuno 1150 Colour Sounder
Has Navigation Lights	Yes
Radio	GME VHF Radio and 27MHz Radio
Number of Life Jackets	16
Exit strategy	Ready for immediate hand over
Bookings	Selling Boat Only
Cruising speed	11-12 knots
Maximum speed	17-18 knots
Usage	Commercial / Charter
Availability	Immediate
Vessel Name	Fishfinder
Minimum Horse Power	430 hp
Passenger capacity	14 +2 in 1E AMSA Survey, 12 + 2 in AMSA 2C Survey, 4 Crew in AMSA 3C Survey

---

### Engine Details

Engine Make	Cummins CT6TA
Horse Power	430
Fuel Type	Diesel
Drive Type	4
Steering	Hydraulic Steering - Vickers VTM42 pump
Fuel Capacity	1800
Propeller	4 Blade

---

### Disclaimer

Our company offers the details of this vessel in good faith but cannot guarantee or warrant the accuracy of this information nor warrant the condition of the vessel. A buyer should instruct his agents and/or surveyors to investigate such details buyer desires validated. This vessel is offered subject to prior sale, price change or withdrawal without notice.